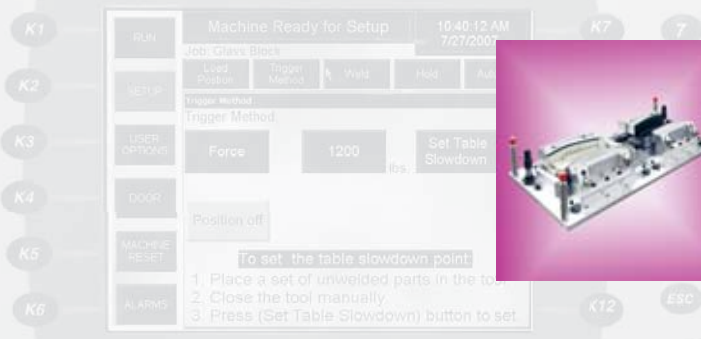


Dukane Vibration Welding

Dukane has been a pioneer in providing plastic assembly solutions for the past 40 years. We offer a family of high frequency vibration welders to meet any of your plastic assembly requirements. Whether the part fits in the palm of your hand or is six feet long...we have a welder to suit your needs!

Allen-Bradley



DUKANE
Intelligent Assembly Solutions

Mechanical Features of All Dukane Vibration Welders

- ▶ Efficient electromagnetic drive system, with proven reliability, complete with digital PWM drives.
- ▶ Heaviest-in-class, one-piece flame cut bridge stops unwanted vibrations at its source.
- ▶ Four continuously supported rails, with eight reciprocating bearings for best table slide in the industry.
- ▶ Robust frame with more cross members to support dovetail slide bridge.
- ▶ Tubular steel table with 1"(25mm) thick Blanchard ground surface provides stable platform for lower tooling.
- ▶ Rexroth hydraulic power unit has large 20-gallon oil reservoir and proportional valve for precise control of table speeds during machine cycle. As well as reducing thermal build up.
- ▶ Backward and forward engineered compatibility means up to 80% of components in welders are interchangeable.
- ▶ Machines do not exceed 80dBA continuous.



Tough, heavy-duty construction.



Dukane VWA 4900 in Custom Color with optional pendant arm

Custom Machine Configurations

- ▶ Manufactured to your unique work environment.
- ▶ Custom PLCs and user interfaces. (Siemens, Modicon, Mitsubishi)
- ▶ Paint to meet your plant specifications.
- ▶ Adjustable ergonomic activation switches.
- ▶ Automated servo controlled pick and place parts removal systems.
- ▶ Custom enclosures – (rear door or other configurations)
- ▶ Light curtain guards, swing up tables, part catchers, parts bins.
- ▶ Exterior work light, power outlets, pneumatic connections, USB, serial ports and system lubrication.
- ▶ Programmable clamps, eject valves, part sensing, bar code readers and color sensing are available.
- ▶ Optional pendant arm for user interface



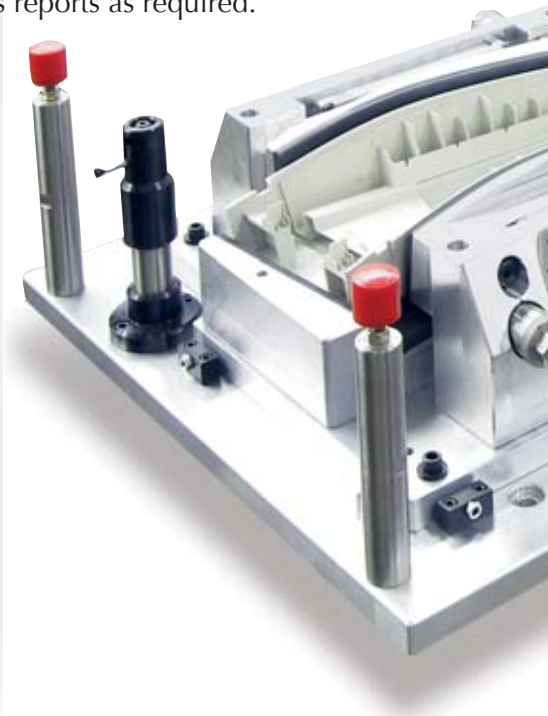
Adjustable Ergonomic Activation Switches



Vibration welder with options

Vibration Tooling

- ▶ High quality tooling built in-house where stringent quality control is supported by Dukane technical personnel.
- ▶ All tools undergo center of mass and drag analysis to ensure optimum running efficiency.
- ▶ Consistent urethane coating thickness is achieved by casting to CAD models.
- ▶ Design reviews via WebEx are a Dukane hallmark, ensuring customer requirements are met before cutting steel.
- ▶ Project engineers provide accurate timelines and progress reports as required.





Advanced HMI



Basic HMI

Features	Advanced HMI	Basic HMI
HMI Process Control	15 inch	7.5 inch
Time	STD	STD
Distance	STD	STD
Amplitude Profile	STD	Optional
Pressure Profile	STD	Optional
Trigger by Force	STD	STD
Trigger by Position	STD	STD
Programmable Valves/Sensors	6 valves, 6 sensors	Optional 2 valves, 2 sensors
Ethernet Communication	STD	Optional
Data Storage	DVD, USB, Hard Drive	
Data History	Unlimited	Last # Cycles
Tooling ID	Optional	Optional
Electronic Manual	STD	N/A
Light Stack	STD	Optional
Process Limits	Graphically enhanced	STD
SPC	Capable	N/A
Security	Customizable	Passwords

m Color
rm

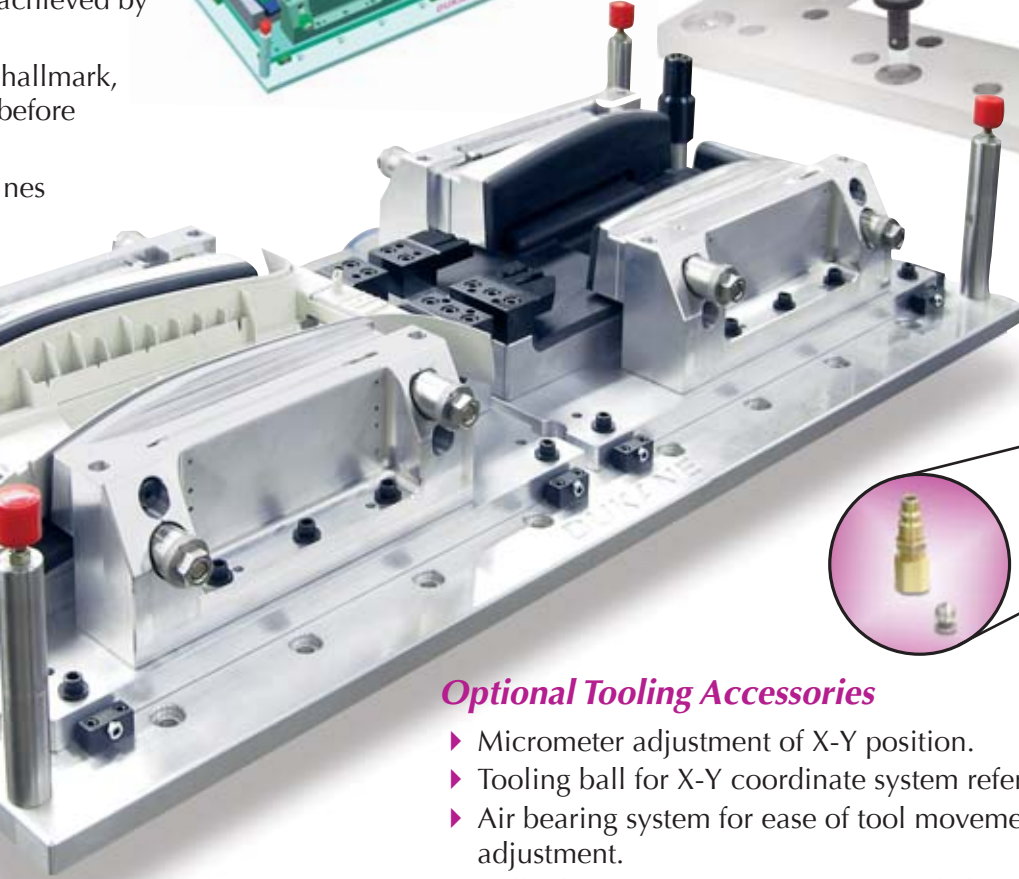
ted

ag analysis

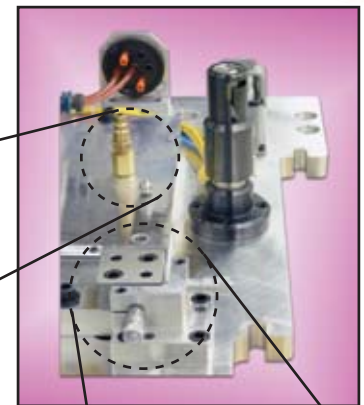
achieved by

hallmark,
before

nes



Quick Tool Change Plates





Optional Tooling Accessories

- ▶ Micrometer adjustment of X-Y position.
- ▶ Tooling ball for X-Y coordinate system reference point.
- ▶ Air bearing system for ease of tool movement during adjustment.
- ▶ Roller bearing system for ease of tool changes.
- ▶ Mechanical camlock slides.
- ▶ Tool recognition.
- ▶ Quick change plate.

One size does NOT fit all!

Dukane offers standard machines in many sizes to cost effectively fit specific needs.

4300	4500	4700	4900
 <p>24" x 18" (610mm x 455mm)</p> <p>20-65 lbs (9-30 kg)</p>	 <p>39" x 18" (991mm x 457mm)</p> <p>50-90 lbs (23-40 kg)</p>	 <p>52" x 24" (1321mm x 610 mm)</p> <p>90-150 lbs (40-68 kg)</p>	 <p>72" x 24" (1829mm x 610 mm)</p> <p>110-200 lbs (50-91 kg)</p>
 <p>Small Pressurized Vessels</p>  <p>High Mount Stoplight</p>  <p>Appliance Pump Housings</p>  <p>Side Marker Light</p>  <p>Filter Assemblies</p>  <p>Small Handles and Brackets</p>	 <p>Glove Boxes and Knee Bolsters</p>  <p>Chainsaw Housings</p>  <p>Taillight</p>  <p>Battery Housings</p>  <p>Blower Assemblies</p>  <p>Food Trays</p>  <p>Pressure Tanks</p>	 <p>Rear Appliques</p>  <p>Rear Spoilers</p>  <p>Tool Lids</p>  <p>Center Consoles</p>	 <p>Fencing</p>  <p>Intake Manifolds</p>  <p>Rear Package Trays</p>  <p>Tonto Covers</p>
			
<p>Our systems are manufactured to ISO 9001:2000 standards, CE and approved for global sales.</p>			

KEY:  = Table size  = Upper tool weight

Specifications subject to change without notice.

Dukane Intelligent Assembly Solutions • 2900 Dukane Drive • St. Charles, Illinois 60174 USA

TEL +1(630) 797-4900 • FAX +1(630) 797-4949 • E-MAIL ussales@dukcorp.com • www.dukcorp.com/us

