



FEATURES

- Electromechanical vibration head assembly (200-240 Hz)
- Four rail table slide system
- Super rigid structural steel frame
- One piece flame cut bridge (heaviest in class, in the industry)
- Structural tubular steel table
- Solid state 50 hp digital variable frequency drive
- Hydraulic lift / clamp force maximum 5500 lbs. (22,000N) 20 gallon (75.6L) reservoir
- Allen-Bradley Compactlogix controller with add-on expansion available
- Allen-Bradley Panel View 700 full color touch screen HMI
- Part parameter monitoring with programmable limits
- Programming for up to 5 part in place sensors included (sensors not included)
- Programming for up to 4 pneumatic valves included (valves not included)
- Programming for vacuum (vacuum generator and valve not included)
- Programming for tool ID included.
- Language capabilities, English and Spanish
- Automatic tuning with auto ping capability
- Programmable amplitude 0.040" to 0.070" (1.0 to 1.8mm)
- Weld by time or weld by distance
- Amplitude and Pressure profile up to 5 steps

The LPT machine design incorporates an upper tooling head with an industry standard 80 mm x 80 mm mounting bolt pattern. It also includes 6 mounting holes in the lower table to accept the industry standard built tooling. This machine platform is used for larger tooling that is typically seen but not limited to the intake manifold type of parts. While we have worked hard to match industry mounting standards, the industry will have to work hard to compete with our super rigid table, frame and slide assembly that has become the hallmark of Dukane vibration welding machines.

- Interior work light
- Optical zero force cycle start activation switches
- Light curtain for single switch activation

SPECIFICATIONS

- Table and maximum lower tool size 52" x 24" (1320 x 610 mm)*
- Door Opening 26" high x 55" wide (660 x 1400 mm)
- Upper tool weight 60 – 180 lbs. (28 - 82 kg)
- Upper tool maximum size 20" x 44" (510 x 1120 mm)
- Low 41" (1040 mm) lift table height
- 20" (500mm) stroke, 25" (630mm) max. opening
- Small 51" x 101" (1.3 x 2.6 m) foot print
- Pneumatic manifold will support additional 2 valves

OPTIONS

- Position adjustable cycle activation switches
- Exterior work light
- PLC options for Siemens or Mitsubishi available
- Custom paint specification
- Rear sliding door for pass through operation
- Programmable pneumatic valves for clamps and slides

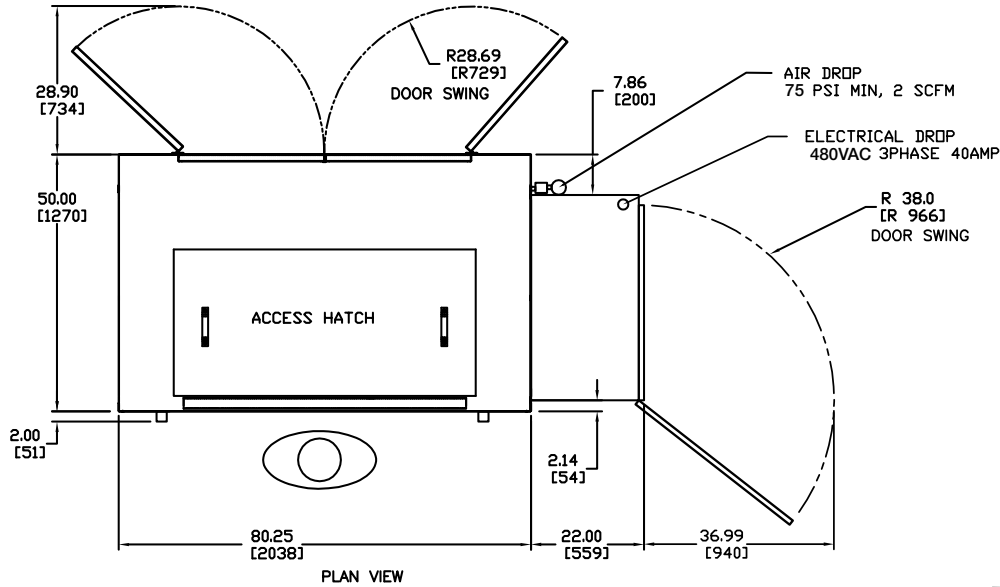
* Tooling can in some instances overhang the back of the table by a modest amount. Consult Dukane for more information.

** Custom lift table or custom frame can be quoted to allow for an uninterrupted bucket of greater depth.

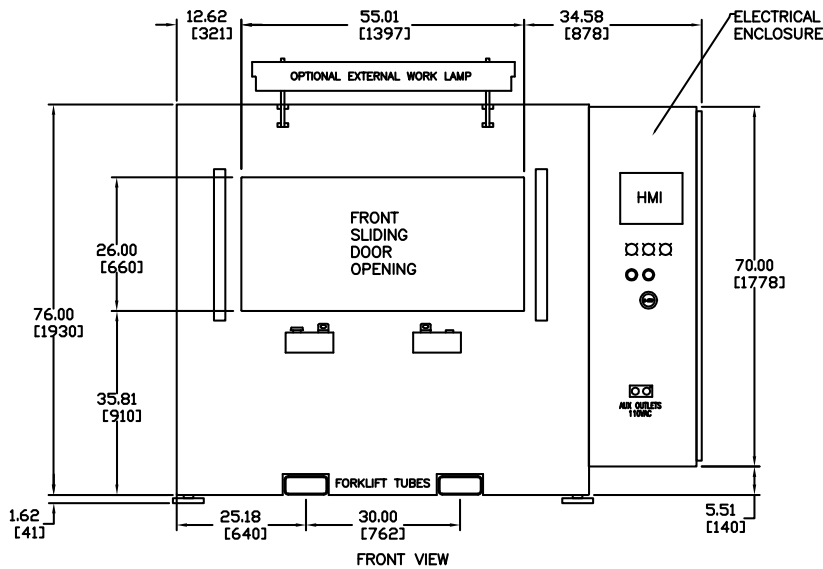
Vibration Welder Model VWB4700LPT Floor Layout

VWB4700LPT

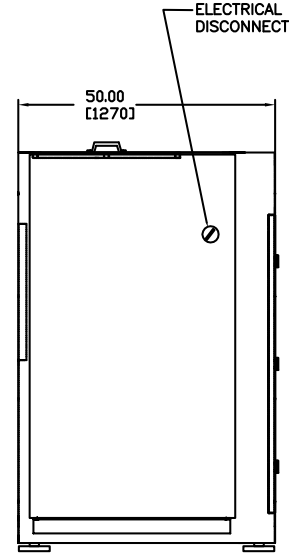
WEIGHT: 8900 LBS



PLAN VIEW

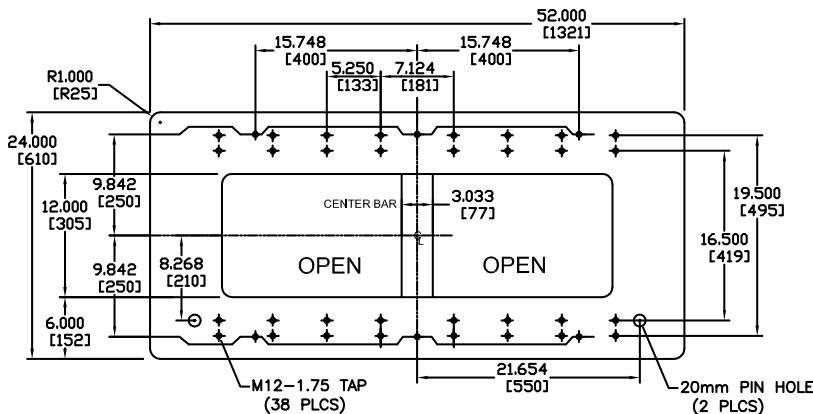


FRONT VIEW

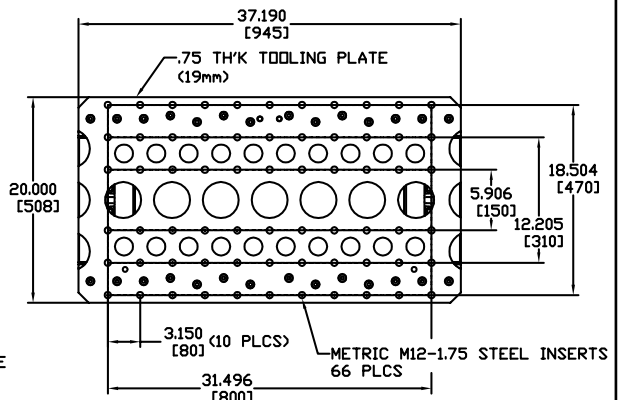


RIGHT SIDE

Fixture hole patterns and dimensions



LIFT TABLE HOLE PATTERN



UPPER TOOLING PLATE BOLT PATTERN

Note: All specifications are subject to change without notice. Please consult Dukane Ultrasonics for any updated information.

DUKANE

ISO 9001

www.dukane.com/ISO-Cert.pdf

#11-0051-00